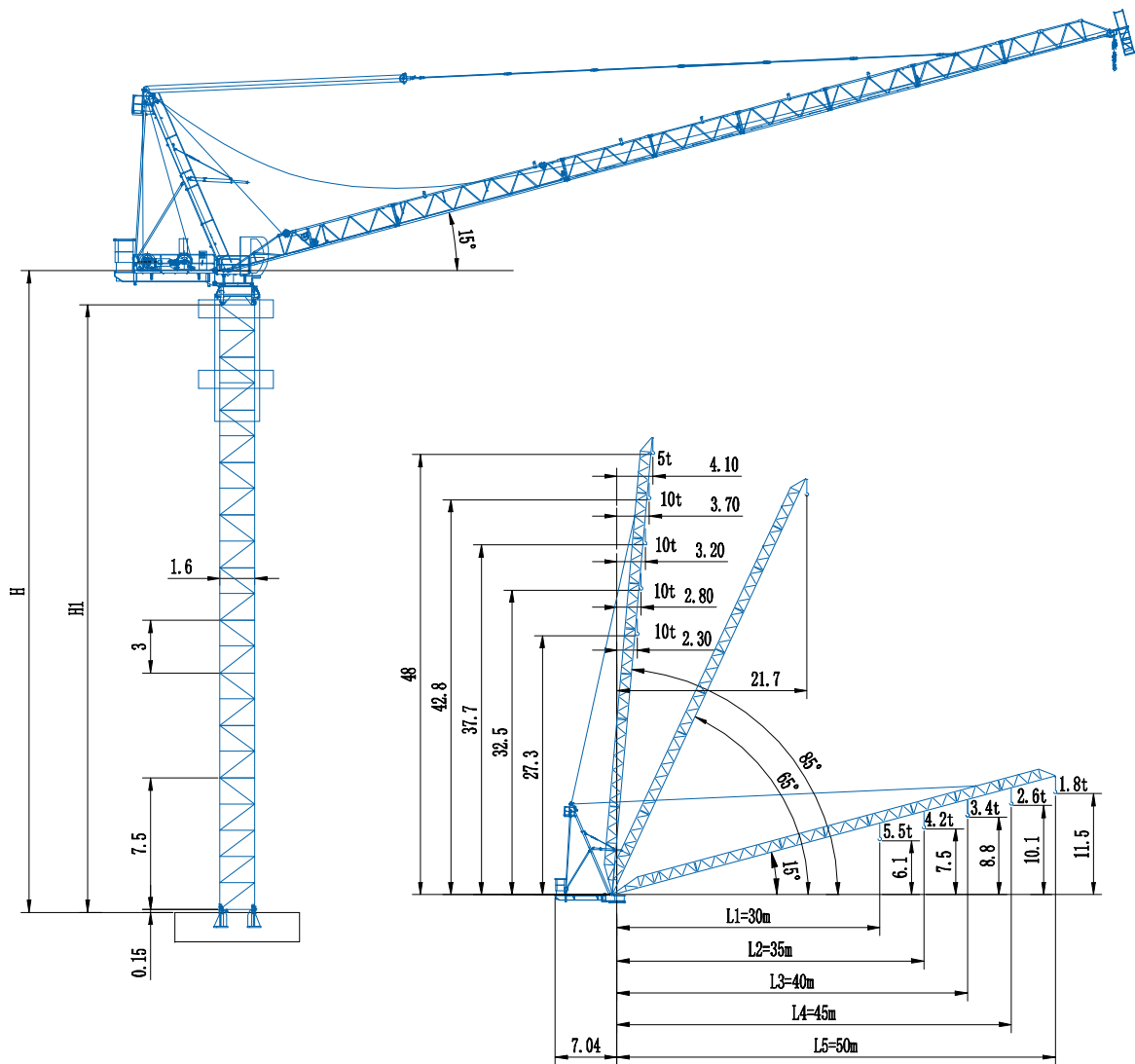


CCTL140A(D5018A)

10t



Radius, angle and elevating capacity

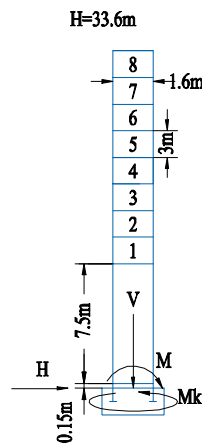
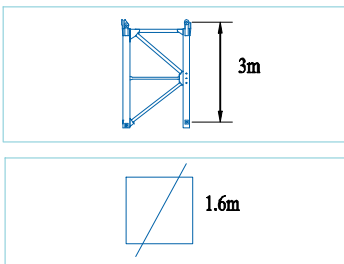


Masts & Foundation Load

D5018A

Foundation load		In service	Out of service
H	kN	30.2	153.3
V	kN	619	578.5
Mk	kN·m	162.9	0
M	kN·m	2382	5939

L48A1



Jib root height H:

Working Radius L1=30m/L2=35m,
tower configuration 1+10, Jib root height H=39.6m

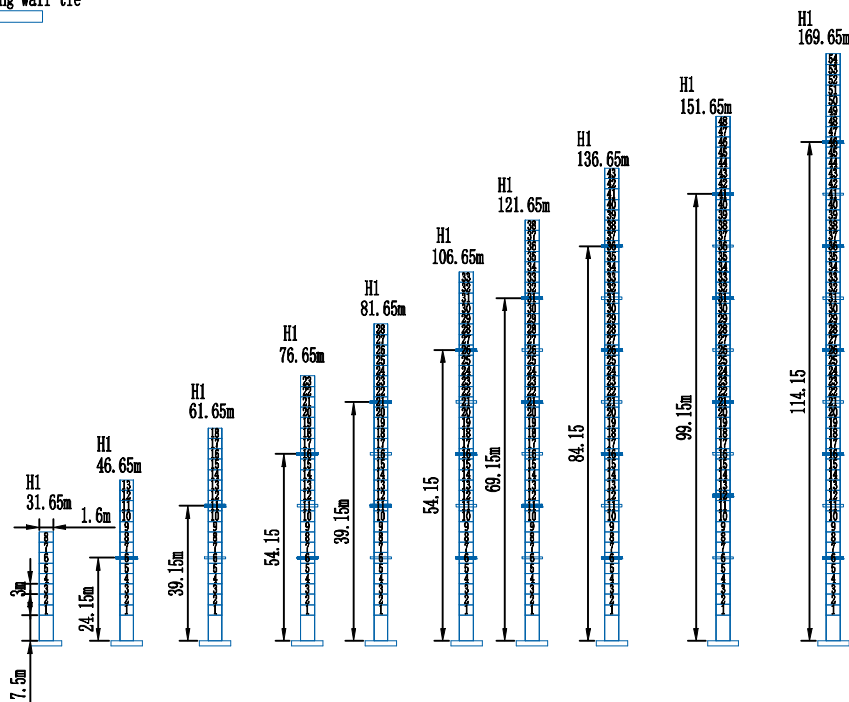
Working Radius L3=40m/L4=45m,
tower configuration 1+9, Jib root height H=36.6m

Working Radius L5=50m,
tower configuration 1+8, Jib root height H=33.6m

Anchorage

Locking wall tie

Loosening wall tie





Load Diagrams

D5018A

50 m radius									
radius	3~28.4	30	35	40	45	50			
2fall	5000	4610	3600	2850	2270	1800			
45 m radius									
radius	3~17.4	20	22.1	25	29.2	30	35	40	45
4fall	10000	8420	7380	6250	5010	4810	3780	3000	2400
3fall		7500		6360	5120	4920	3880	3100	2500
2fall		5000				5010	3980	3200	2600
40 m radius									
radius	3~17.7	20	22.5	25	30	35	40		
4fall	10000	8620	7410	6450	5010	3970	3200		
3fall		7500		6560	5110	4070	3300		
2fall		5000				3970	3200		
35 m radius									
radius	3~18.1	20	23.1	25	30	34.9	35		
4fall	10000	8620	7330	6680	5230	4220	4200		
3fall		7500		6780	5330	4320	4300		
2fall		5000					4400		
30 m radius									
radius	3~18.3	20	23.5	25	30				
4fall	10000	9020	7380	6840	5400				
3fall		7500		6950	5500				
2fall		5000							

Mechanisms

Hoisting		Fall	/				
		Speed	m/min	0~31.1	0~62.3	0~15.6	0~31.1
		LoadCapacityWeight	t	5.0	2.3	10	4.6
		Power	kw	37			
Trolleying		Time	min	≤3			
		Power	kw	30			
Slewing		Speed	r/min	0~0.67			
		Power	kw	5.5×2			

DAHAN Dahan Technology Co., Ltd.

Address: Zheshan Industrial Park, Mingshui Economic Development Zone, Zhangqiu District, Shandong Province, China
 Telephone: +86 531 83278899
 Email: dahancranesale@yeah.net
 Website: www.chinatowercranes.com

Note: Dahan Construction Machinery keeps innovating, so the actual product caused by the product does not match the appearance and technical parameters of the sample. The actual product shall prevail. If there is any change, the company has the final interpretation of the sample. 2019.12 print